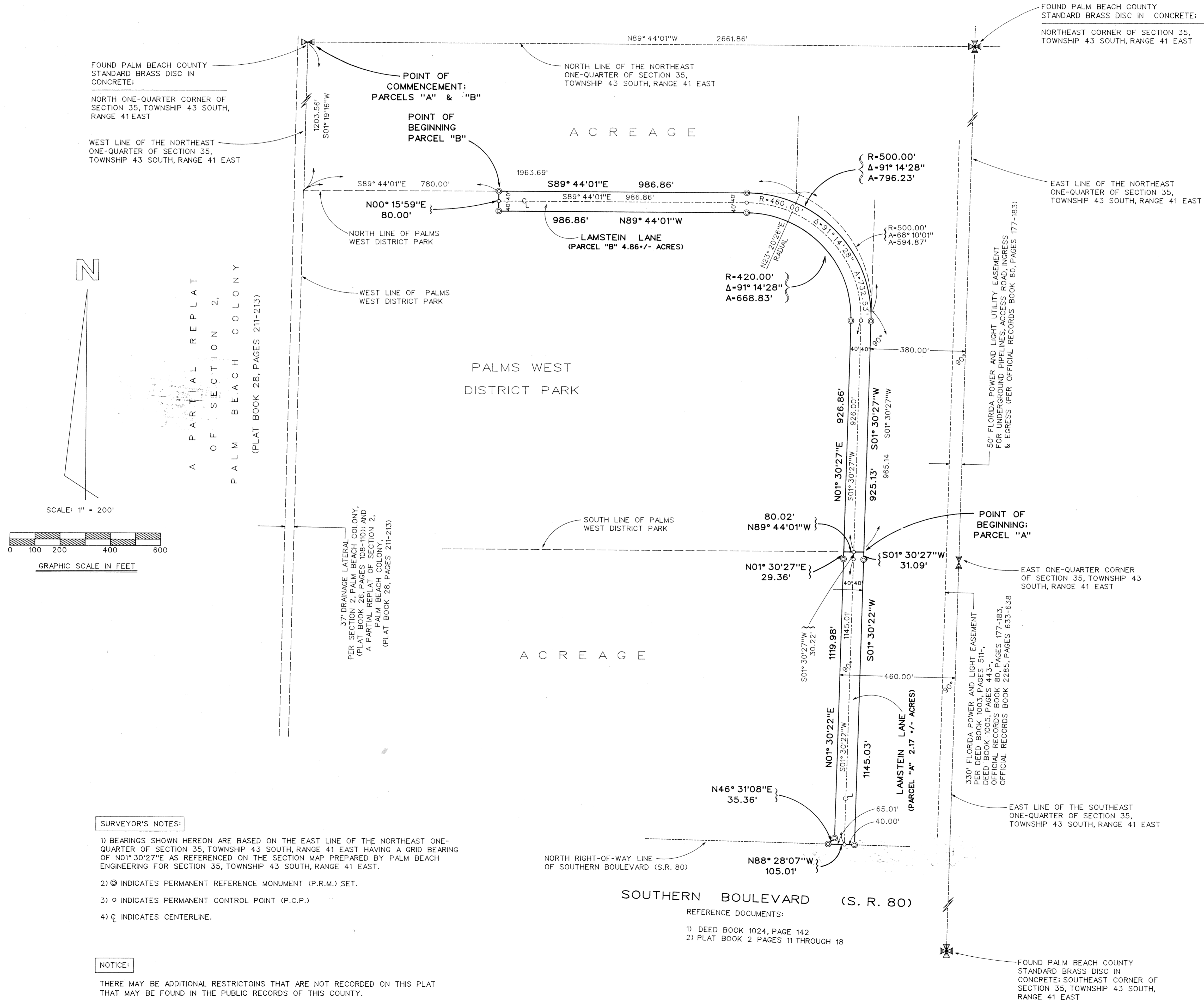


# "PALMS WEST DISTRICT PARK - ENTRANCE ROAD"

A PORTION OF SECTION 35, TOWNSHIP 43 SOUTH, RANGE 41 EAST  
 VILLAGE OF ROYAL PALM BEACH, PALM BEACH COUNTY, FLORIDA  
 NOVEMBER, 1995 SHEET 2 OF 2 SHEETS

# 150



**SURVEYOR'S NOTES:**

- 1) BEARINGS SHOWN HEREON ARE BASED ON THE EAST LINE OF THE NORTHEAST ONE-QUARTER OF SECTION 35, TOWNSHIP 43 SOUTH, RANGE 41 EAST HAVING A GRID BEARING OF N01°30'27"E AS REFERENCED ON THE SECTION MAP PREPARED BY PALM BEACH ENGINEERING FOR SECTION 35, TOWNSHIP 43 SOUTH, RANGE 41 EAST.
- 2) ⊙ INDICATES PERMANENT REFERENCE MONUMENT (P.R.M.) SET.
- 3) ○ INDICATES PERMANENT CONTROL POINT (P.C.P.).
- 4) ⊕ INDICATES CENTERLINE.

**NOTICE:**

THERE MAY BE ADDITIONAL RESTRICTIONS THAT ARE NOT RECORDED ON THIS PLAT THAT MAY BE FOUND IN THE PUBLIC RECORDS OF THIS COUNTY.

SUBDIVISION: PALMS WEST DISTRICT PARK  
 BOOK: 76  
 PAGE: 150  
 FLOOD MAP: 050-B  
 ZONING:  
 QUAD: 61  
 SE:  
 PUD NAME: PALMS WEST DISTRICT PARK  
 ZIP CODE: 33411

plat prepared by:  
**Heller-Weaver and Cato, Inc.**  
 engineers ... surveyors ... planners  
 310 s.e. 1st street, suite 4  
 delray beach, florida 33483  
 phone (407) 243-8700



THIS INSTRUMENT WAS PREPARED BY:  
 JOHN D. WEAVER IN THE OFFICES OF  
 HELLER-WEAVER AND CATO, INC.  
 310 S.E. 1ST STREET, SUITE 4,  
 DELRAY BEACH, FL 33483  
 (407) 243-8700